

# TARGETPROCESS TEAM FOUNDATION SERVER INTEGRATION GUIDE



v.2.15

Team Foundation Server Integration Guide

This document describes Team Foundation Server plugin configuration.

**TEAM FOUNDATION SERVER ITEGRATION OVERVIEW.....2**

**CONFIGURE TEAM FOUNDATION SERVER PLUGIN IN TARGETPROCESS.....3**

    STEP 1: TEAM FOUNDATION SERVER CONNECTION ..... 4

    STEP 2: PROJECTS ..... 4

    STEP 3: START REVISION ..... 5

    STEP 4: USERS MAPPING..... 5

**HOW TO CHECK SYNCHRONIZATION RESULTS.....6**

**OTHER.....8**

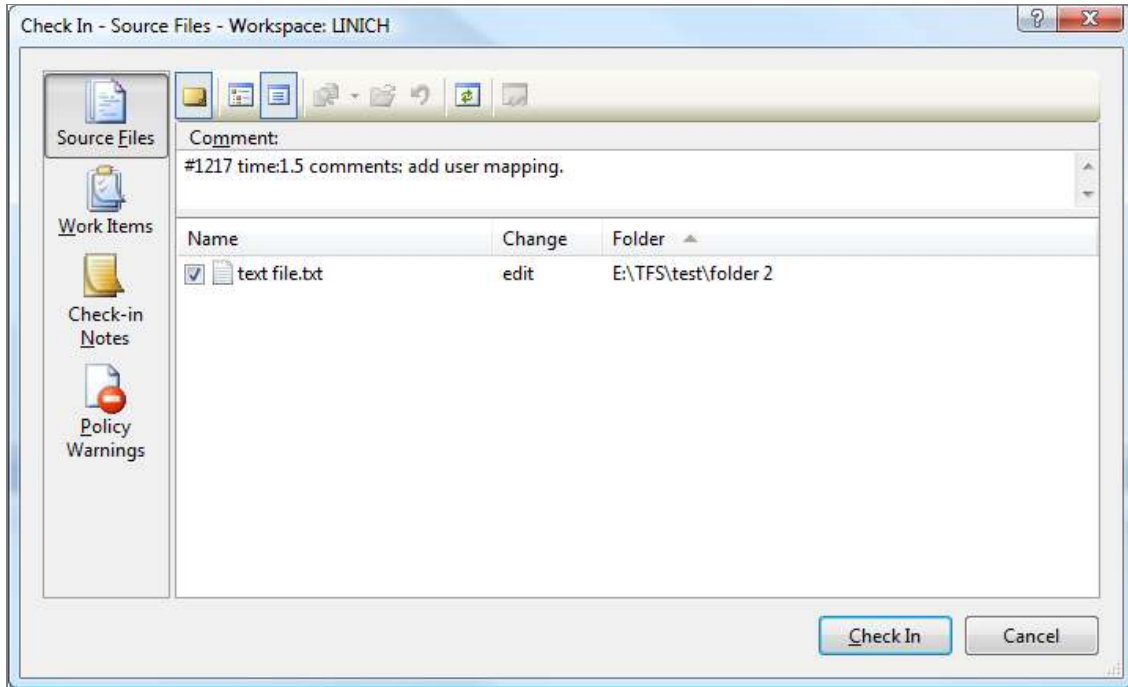
# Team Foundation Server Integration Overview

Integration with Team Foundation Server allows developers to avoid some repetitious actions in TargetProcess related to Bugs fixing, User Stories and Tasks implementations and committing files to source control system by using comment in a special syntax. TargetProcess will automatically perform actions stated in a single comment.

**NOTE: #ID may represent Bug ID, User Story ID or Task ID.**

By the use of the comment on commit in Team Foundation Server users can do the following:

1. Change defect states  
*#ID state:fixed*
2. Add comments to defect:  
*#ID comment: text of your comment here*  
*comment: this is a second multiline comment row1*  
*row2*
3. Add time spent only  
*#ID time:1*
4. Update time spent and time remaining.  
*#ID time:1:12*
5. Update several defects at one time  
*#ID,#ID comment: will not be fixed state: invalid time:0.5*



## Configure Team Foundation Server Plugin in TargetProcess

Go to [Admin](#) -> [Plugins](#) and click '[Add Profile](#)' link for Team Foundation Server Integration in Source Control section. The profile form will appear. You should specify Profile Name. It is recommended to use project name in profile name, since each profile usually relates to exactly one project.

**Team Foundation Server Integration**  
Connects to Team Foundation Server periodically and synchronizes revisions from Perforce with TargetProcess

Profile Name  
TFS

**TFS Connection**

Server Name  
Specify server name (Ex: http://tfs\_server:8080)  
http://tst-tp:8080

Team Project Name  
anthony

Sync Interval  
Specify sync interval in minutes (short intervals may reduce system performance)  
5

**TFS Starting Revision**

Start Revision  
Starting Revision (all existing revisions starting with the specified number will be processed)  
0

**Users Mapping**

Users  
Specify TFS-to-TargetProcess users mapping by username or email (Ex: TeddyBear -> teddy@targetprocess.com). Required for correct revisions import.

Team Foundation Server → TargetProcess  
Add

**TFS Authentication**

Login  
office\operator

Password  
\*\*\*\*\*

**Project Mapping**

Project  
Specify the Project you want to synchronize with TFS. Revisions from TFS will be added to this Project.  
Private Universe #1

Save & Exit    Cancel

## Step 1: Team Foundation Server Connection

You should specify several parameters to enable connection to Team Foundation Server server:

- Server name: path to project.
- Team Project Name: team project Name
- Sync Interval: specifies the frequency of retrieving changes from Team Foundation Server. Cannot be less than 5 minutes
- Team Foundation Server Login and Password: Username and password of a person who has permissions to the project in Team Foundation Server.

## Step 2: Projects

Each Team Foundation Server Integration profile relates to one and only one project. It means if you want to enable integration for several projects you should create several profiles.

Project drop-down list will display only those projects that have 'Source Control' practice enabled (Admin > Processes).

The screenshot shows a configuration form with the following sections:

- Profile Name:** TFS
- TFS Connection:**
  - Server Name: Search center name (Ex: tfs2008\_server001)
  - URL: http://tfs:8180
  - Team Project Name: /tfs/
  - Sys. Interval: Search only internal in minutes (short intervals may reduce system performance): 15
- TFS Authentication:**
  - Login: officeoperator
  - Password: \*\*\*\*\*

### Step 3: Start Revision

You can also specify the revision number and TargetProcess will retrieve only changes from all revisions above this number.

### Step 4: Users Mapping

TargetProcess should know who will be the author of particular commitments. By default TargetProcess tries to find login that matches Team Foundation Server username. For example, if you have registered Team Foundation Server user with username Jackson and have user with the same login name in TargetProcess, it will be fine. But if there is no such login name in TargetProcess, it is required to map users in Users Mapping section.

You can map Team Foundation Server username to user email or login in TargetProcess: [TeddyBear -> teddy@targetprocess.com] or [TeddyBear-> teddy]

The screenshot shows the 'Users Mapping' section with the following details:

- Users:** Specify TFS-to-TargetProcess users mapping by username or email (Ex: TeddyBear -> teddy@targetprocess.com). Required for correct revisions import.
- Table:**

Team Foundation Server	TargetProcess	
TeddyBear	teddy@targetprocess.com	<a href="#">Edit Del</a>
- Add:** A form with two input fields: 'Team Foundation Server' and 'TargetProcess', separated by an arrow, with an 'Add' button.

# How to Check Synchronization Results

Save profile settings (find **Save & Exit** button at the bottom of the form). Click the **Check connection** button for created profile to ensure that all settings are correct and TargetProcess can access the repository.

Show Help Show this page info Successfully connected. Team Foundation Server Integration Settings; Server=http://tst-tp:8080; TFS Project='anthony'

### Plugins

#### Help Desk

<b>Auto Reply To Requester</b> Sends auto-reply email to Requester person when new Request created.	<a href="#">Add Profile</a>
<b>Bind Email/Request To Project</b> Sorts incoming emails/requests to different projects based on a keyword in the email subject.	<a href="#">Add Profile</a>

#### Acceptance Testing

<b>Automatic NUnit Test Run Import</b> Imports automatic test run results to TargetProcess from NUnit.	<a href="#">Add Profile</a>
<b>Automatic Selenium Test Run Import</b> Imports automatic test run results to TargetProcess from Selenium.	<a href="#">Add Profile</a>

#### Bug Tracking

<b>Bugzilla Integration</b> Connects to Bugzilla periodically and synchronizes bugs from Bugzilla with TargetProcess bugs. Changes bug state in Bugzilla when it changes in TargetProcess.	<a href="#">Add Profile</a>
<b>Jira Integration</b> Connects to Jira periodically and synchronizes defects from Jira with TargetProcess bugs. Changes defect state in Jira when it changes in TargetProcess.	<a href="#">Add Profile</a>
<b>TestTrackPro Integration</b> Connects to TestTrackPro periodically and synchronizes defects from TestTrackPro with TargetProcess bugs.	<a href="#">Add Profile</a>

#### Source Control

<b>Perforce Integration</b> Connects to Perforce periodically and synchronizes revisions from Perforce with TargetProcess	<a href="#">Add Profile</a>
<b>SourceSafe Integration</b> Connects to SourceSafe periodically and synchronizes revisions from Perforce with TargetProcess	<a href="#">Add Profile</a>
<b>Subversion Integration</b> Connects to Subversion periodically and synchronizes revisions from Subversion with TargetProcess	<a href="#">Add Profile</a>
<input type="checkbox"/> <b>Team Foundation Server Integration</b> Connects to Team Foundation Server periodically and synchronizes revisions from Perforce with TargetProcess	<a href="#">Add Profile</a>

TFS
Check connection
Sync Now
Enable
[Log](#)

Click **Enable** button and plugin will start synchronizing. Team Foundation Server synchronization will be run as frequently as configured in your plugin profile.

If you need to force the synchronization immediately, you have to disable running profile and then click **Synch Now** button.

To check sync results, click *Log* link for plugin profile. You will see sync log.

The log for Team Foundation Server Integration profile 'TFS'

[Delete selected](#)

Date	Successfull	Message
<a href="#">13-Aug-2009 12:36:37</a>	✓	No new changes detected in Project 'Private Universe #1'
<a href="#">13-Aug-2009 12:36:28</a>	✗	Revision 6 Files:...

The log shows all sync sessions with results. You may click on date to see sync session details: committed file names and information about particular changes done in revision and errors description (if any).

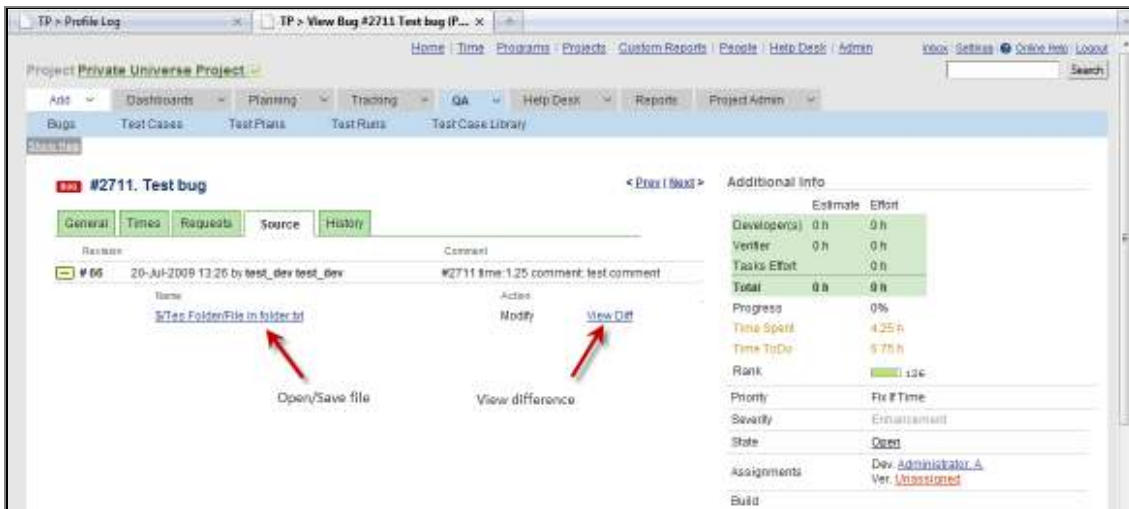
**Profile Log Entry**

**Revision 6**

**Files:**  
 \$test\new folder\New Microsoft Office Word Document.docx - Add

**Errors:**  
 User with login "operator" does not exist in TargetProcess. In this case change state, comments and time addition will not be processed on commit changes

After synchronization you can view committed changes in 'Source' tab of detailed view of particular Bug, User Story or Task. From this page you can view added/modified files or view the difference of current and previous versions of the files committed.



## Other

Please, email to **support@targetprocess.com** if any problems with Team Foundation Server integration.

Visit support forum at <http://support.targetprocess.com> or TargetProcess Help Desk at <http://helpdesk.targetprocess.com>

If you have any questions about TargetProcess, just contact us:

Email: [info@targetprocess.com](mailto:info@targetprocess.com)

Web: <http://www.targetprocess.com>