

# TARGETPROCESS SUBVERSION INTEGRATION GUIDE



v.2.14

Subversion Integration Guide

This document describes Subversion plugin configuration.

**SUBVERSION INTEGRATION OVERVIEW .....3**

**CONFIGURE SUBVERSION PLUGIN IN TARGETPROCESS .....4**

    STEP 1: SUBVERSION CONNECTION..... 4

    STEP 2: PROJECTS ..... 5

    STEP 3: START REVISION ..... 5

    STEP 4: USERS MAPPING..... 5

**HOW TO CHECK SYNCHRONIZATION RESULTS .....6**

**OTHER .....7**

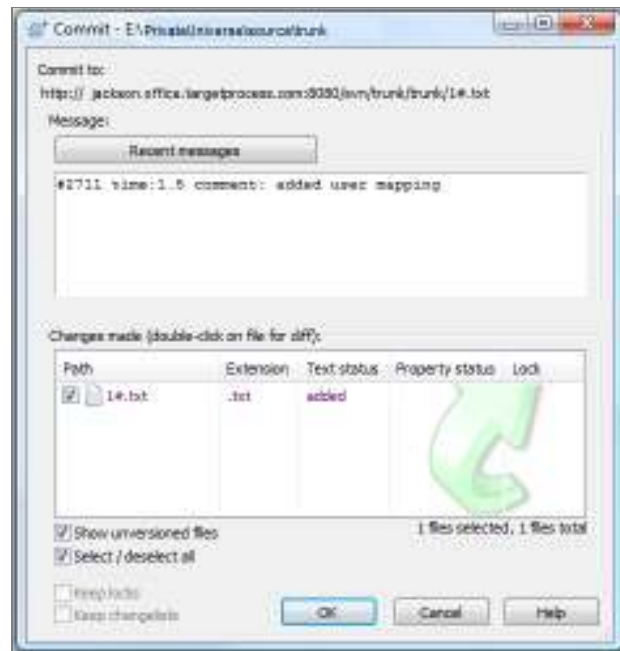
# Subversion Integration Overview

Integration with Subversion allows developers to avoid some repetitious actions in TargetProcess related to Bugs fixing, User Stories and Tasks implementations and committing files to source control system by using comment in a special syntax. TargetProcess will automatically perform actions stated in a single comment.

**NOTE: #ID may represent Bug ID, User Story ID or Task ID.**

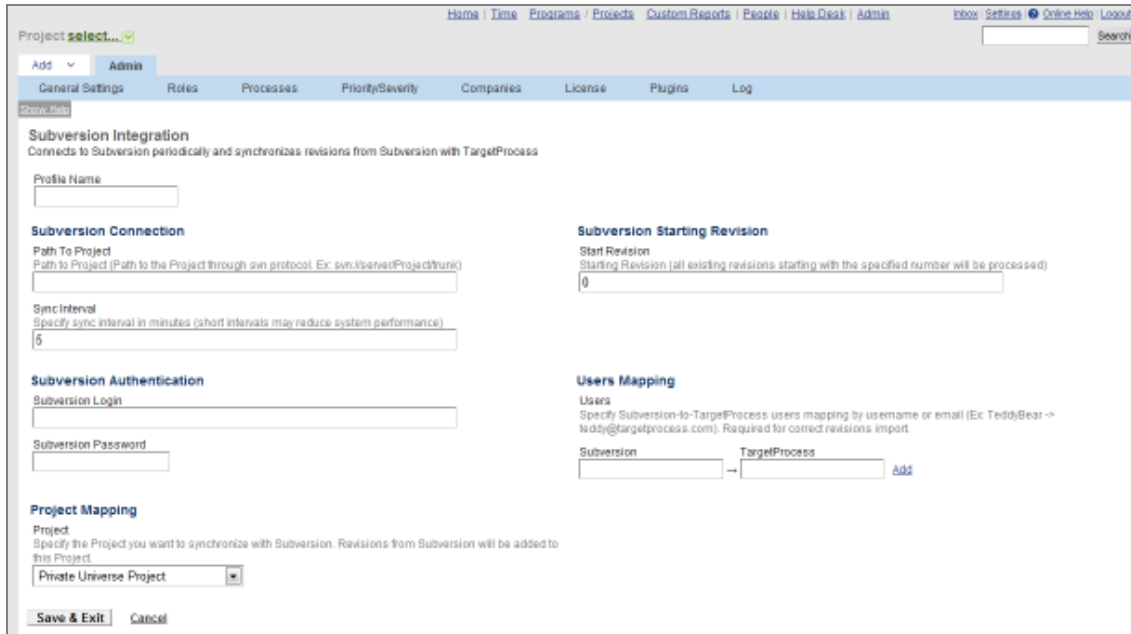
By the use of the comment on commit in Subversion users can do the following:

1. Change defect states  
*#ID state:fixed*
2. Add comments to defect:  
*#ID comment: text of your comment here*  
*comment: this is a second multiline comment row1*  
*row2*
3. Add time spent only  
*#ID time:1*
4. Update time spent and time remaining.  
*#ID time:1:12*
5. Update several defects at one time  
*#ID,#ID comment: will not be fixed state: invalid time:0.5*



# Configure Subversion Plugin in TargetProcess

Go to **Admin** -> **Plugins** and click 'Add Profile' link for Subversion Integration in Source Control section. The profile form will appear. You should specify Profile Name. It is recommended to use project name in profile name, since each profile usually relates to exactly one project.



The screenshot shows the 'Subversion Integration' configuration form in the TargetProcess Admin interface. The form is titled 'Subversion Integration' and includes the following sections:

- Profile Name:** A text input field for specifying the profile name.
- Subversion Connection:**
  - Path To Project:** A text input field for the path to the project through svn protocol (e.g., svn://server/Project/trunk).
  - Sync Interval:** A text input field for specifying the sync interval in minutes (short intervals may reduce system performance), with a value of '5' entered.
- Subversion Authentication:**
  - Subversion Login:** A text input field for the Subversion username.
  - Subversion Password:** A text input field for the Subversion password.
- Subversion Starting Revision:**
  - Start Revision:** A text input field for the starting revision number, with a value of '0' entered.
- Users Mapping:**
  - Users:** A text input field for specifying Subversion-to-TargetProcess users mapping by username or email (e.g., TeddyBear -> teddy@targetprocess.com).
  - Mapping:** A section with two input fields labeled 'Subversion' and 'TargetProcess', connected by an arrow and an 'Add' button.
- Project Mapping:**
  - Project:** A dropdown menu for specifying the project to synchronize with Subversion. The selected project is 'Private Universe Project'.

At the bottom of the form, there are 'Save & Exit' and 'Cancel' buttons.

## Step 1: Subversion Connection

You should specify several parameters to enable connection to Subversion server:

- **Path To Project:** path to project.
- **Sync Interval:** specifies the frequency of retrieving changes from Subversion. Cannot be less than 5 minutes
- **Subversion Login and Password:** Username and password of a person who has permissions to the project in Subversion.

**Subversion Connection**  
Path To Project  
Path to Project (Path to the Project through svn protocol. Ex: svn://server/Project/trunk)  
  
Sync Interval  
Specify sync interval in minutes (short intervals may reduce system performance)  
  
**Subversion Authentication**  
Subversion Login  
  
Subversion Password

## Step 2: Projects

---

Each Subversion Integration profile relates to one and only one project. It means if you want to enable integration for several projects you should create several profiles. Project drop-down list will display only those projects that have 'Source Control' practice enabled ( > .

## Step 3: Start Revision

---

You can also specify the revision number and TargetProcess will retrieve only changes from all revisions above this number.

## Step 4: Users Mapping

---

TargetProcess should know who will be the author of particular commitments. By default TargetProcess tries to find login that matches Subversion username. For example, if you have registered Subversion user with username Jackson and have user with the same login name in TargetProcess, it will be fine. But if there is no such login name in TargetProcess, it is required to map users in Users Mapping section.

You can map Subversion username to user email or login in TargetProcess:  
*[Jackson -> SpongeBob@targetprocess.com] or [Jackson -> SpongeBob]*

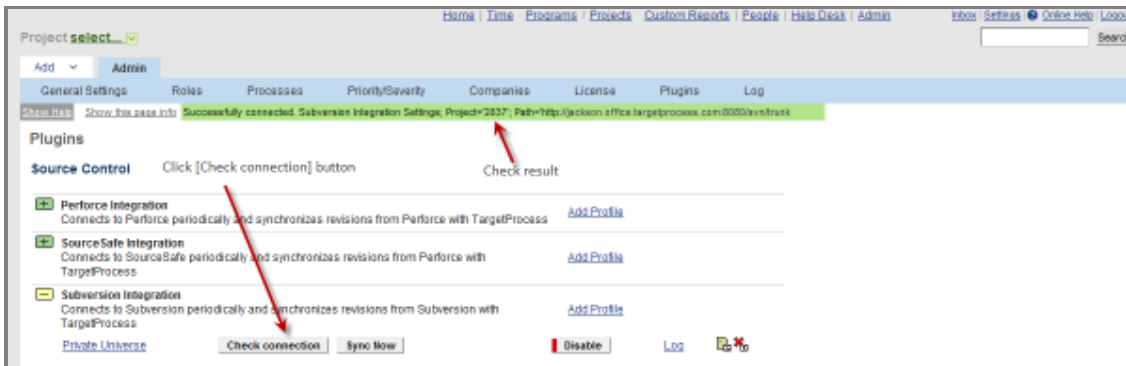
**Users Mapping**

Users  
Specify Subversion-to-TargetProcess users mapping by username or email (Ex: TeddyBear -> teddy@targetprocess.com). Required for correct revisions import.

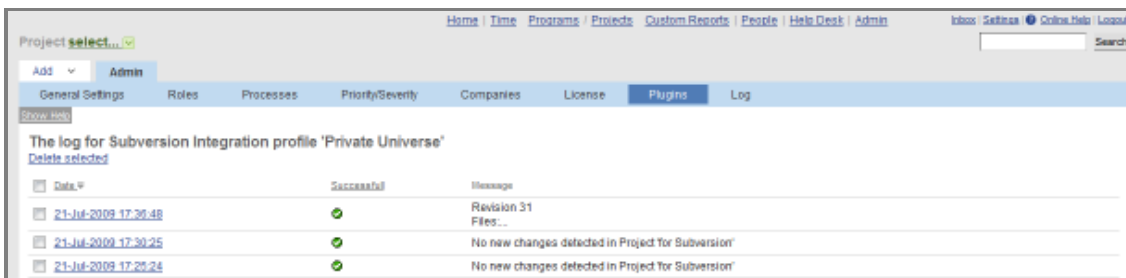
Subversion	TargetProcess	
Jackson	SpongeBob@targetprocess.com	<a href="#">Edit</a> <a href="#">Del</a>
<input type="text"/>	<input type="text"/>	<a href="#">Add</a>

## How to Check Synchronization Results

Save profile settings (find **Save & Exit** button at the bottom of the form). Click the **Check connection** button for created profile to ensure that all settings are correct and TargetProcess can access the repository.



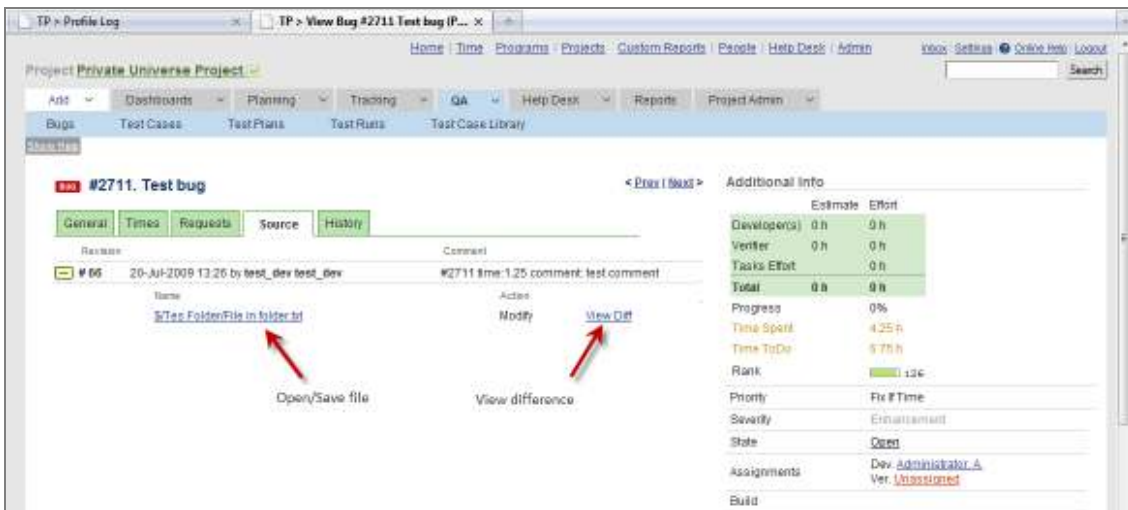
Click **Enable** button and plugin will start synchronizing. Subversion synchronization will be run as frequently as configured in your plugin profile. If you need to force the synchronization immediately, you have to disable running profile and then click **Synch Now** button. To check sync results, click **Log** link for plugin profile. You will see sync log.



The log shows all sync sessions with results. You may click on date to see sync session details: committed file names and information about particular changes done in revision and errors description (if any).

<b>Profile Log Entry</b>  <b>Revision 31</b> Files: /trunk/README.txt - Add  Errors: Entity with #2711 was not found for project for Subversion!	<b>Additional Info</b> Plugin: Subversion Integration Profile: Private Universe Successful: Creation Date: 21-Jul-2009 17:36:48
---	---

After synchronization you can view committed changes in 'Source' tab of detailed view of particular Bug, User Story or Task. From this page you can view added/modified files or view the difference of current and previous versions of the files committed.



## Other

Please, email to [support@targetprocess.com](mailto:support@targetprocess.com) if any problems with Subversion integration.

Visit support forum at <http://support.targetprocess.com> or TargetProcess Help Desk at <http://helpdesk.targetprocess.com>

If you have any questions about TargetProcess, just contact us:

Email: [info@targetprocess.com](mailto:info@targetprocess.com)

Web: <http://www.targetprocess.com>